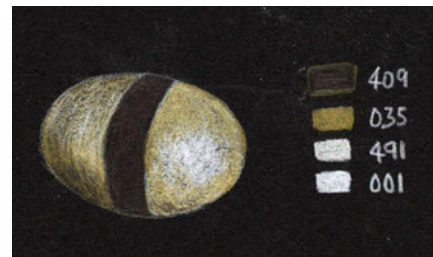
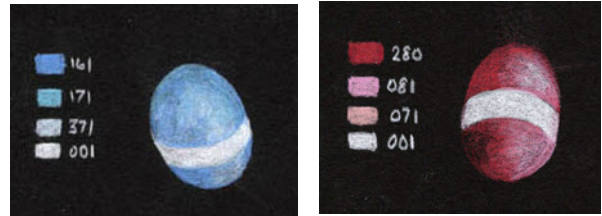


## Exercise 26 The Sweet Jar



Exercise on black paper of a collection of items, some transparent and some metallic ( foil wrapped sweets)

My trial of the individual sweets looked like this



You will see from my final image (below) that I changed the choice of sweets as I progressed.

I suggest that you try out your skills on a selection of sweets on a piece of black paper, and then fill the jar with your own variety collection.

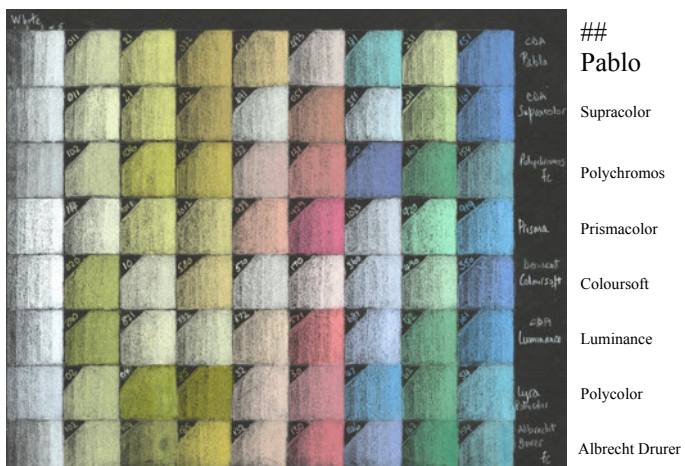


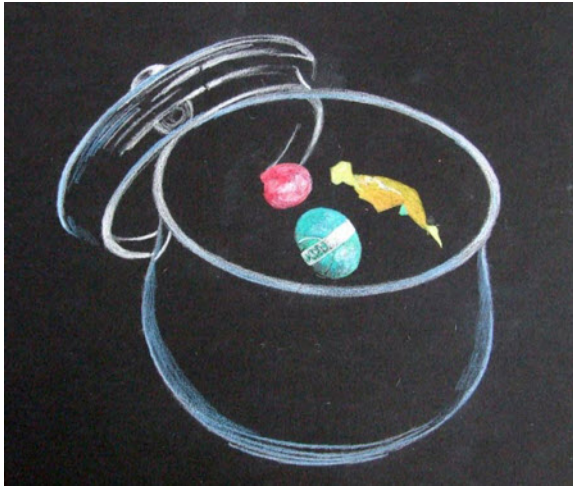
You will see in each case that I selected four graded colours - white and three others



There is little difference between the way the main pencil brands work on black paper. The softer wax brands like Coloursoft and Prismacolor will work particularly well, but I chose Caran d'Ache Pablo ## in the end for the selection of colours. I also used a Caran d'Ache Luminance white pencil for the final white highlights as this is the softest and most opaque. The chart below shows the way the brands worked on black Stonehenge paper

The first step is to transfer the outline of the jar on to the paper. This needs care and remember that you need to use a white coloured pencil to take the image across. I always use a dry watercolour pencil for this job as the pigment seems to transfer much more easily when it is in a soluble binder rather than encased in wax. Clean up any odd white marks from the black surface before starting on the picture



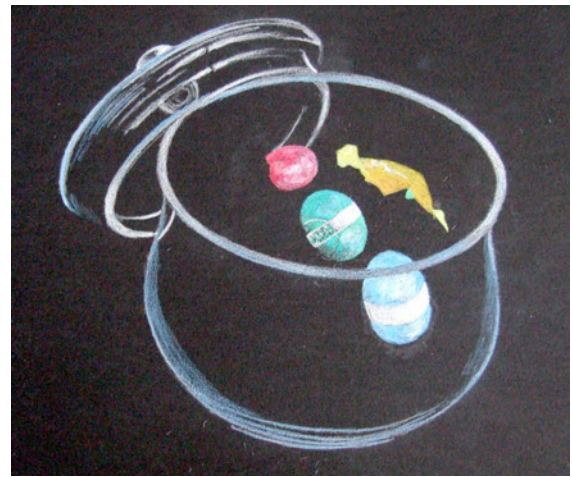


I have started with the first sweets. Just look at two or three of them in the original picture and place them exactly where they should be in the jar. Develop the colours on the foil by putting down the highlight first allowing the white to stray further into the coloured area than it does in fact and fade the white out into a very light tint. Then work back into it from the darkest tint of colour. When you reach the white, carry on over the top and you will be able to shade the colour from dark through to the lightest version of the colour, leaving the highlight as white.

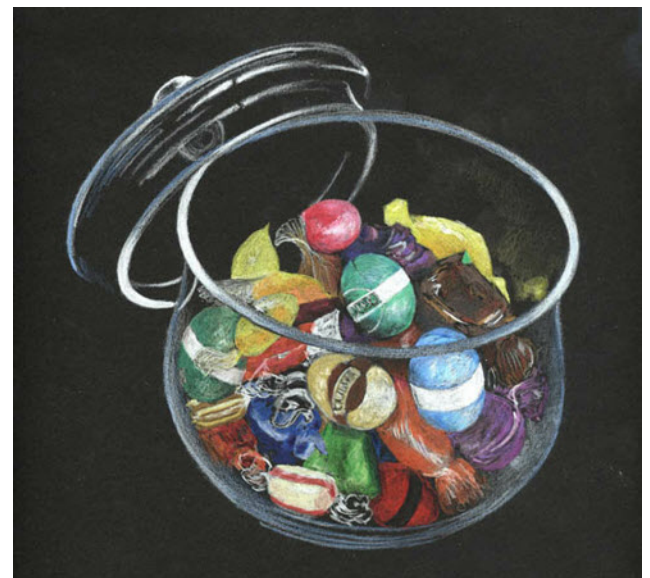
The fruit sweets are semi transparent and you need to identify where the changes in colour are and carefully duplicate them on to the paper.

Once you have done a few sweets from the photo, you will find it much easier to invent sweets and/or do some different ones from life.

Here is a close up of two of the sweets.  
Try and duplicate the crackled look of wrapped foil



There are one or two 'newcomers' shown now I have gone back to a few of the old favourite Quality Street shapes



And even a striped peppermint

The Sweet Jar design is copyright © 2009  
Peter Weatherill